

## DESCRIPTION

Cast aluminum flush gimbal ring designed for use with AIR-TITE™ 3" Halo small aperture line and low voltage housings. Trim ring is available in five finishes to match interior decor. Adjustable gimbal ring trim uses MR16 low voltage or GU10 line voltage lamps ideal for accent and task lighting. Trim offers 35° tilt and -15° reverse tilt and 360° rotation.

|                    |  |             |
|--------------------|--|-------------|
| <b>Catalog #</b>   |  | <b>Type</b> |
| <b>Project</b>     |  |             |
| <b>Comments</b>    |  | <b>Date</b> |
| <b>Prepared by</b> |  |             |

## DESIGN FEATURES

Cast aluminum trim and gimbal ring available in Matte White, Black, Satin Nickel, Antique Copper or Tuscan Bronze finishes with Black Baffle or Matte White finish with White baffle. Three pressure springs ensure positive retention in housing.

Trim includes cover glass lens which may be replaced with a variety of media. (Lamps that have integral glass lens do not require use of the cover glass supplied with this trim.)

3009 is designed for use with the following small aperture housings;

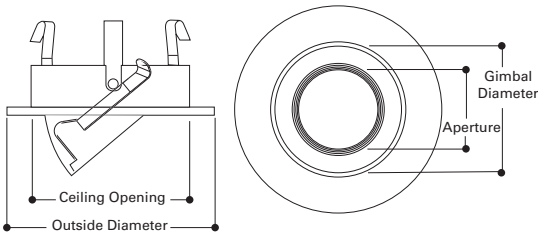
- Line Voltage Housing (for 120V GU10 lamps). For 2 x 6 Construction
 

|         |     |                                 |
|---------|-----|---------------------------------|
| H36ICAT | 50W | IC Air-Tite Housing             |
| H36TAT  | 50W | Non-IC Airtite Housing          |
| H36RTAT | 50W | Non-IC Air-Tite Remodel Housing |
- Low Voltage Housing (for 12V MR16 lamps). For 2 x 6 Construction
 

|           |     |                                 |
|-----------|-----|---------------------------------|
| H36LVICAT | 50W | IC Air-Tite Housing             |
| H36LVTAT  | 50W | Non-IC Air-Tite Housing         |
| H36LVRTAT | 50W | Non-IC Air-Tite Remodel Housing |
- Line Voltage Housing (for 120V GU10 lamps). For 2 x 8 Construction
 

|         |     |                     |
|---------|-----|---------------------|
| H38ICAT | 50W | IC Air-Tite Housing |
|---------|-----|---------------------|
- Low Voltage Housing (for 12V MR16 lamps). For 2 x 8 Construction
 

|           |     |                     |
|-----------|-----|---------------------|
| H38LVICAT | 50W | IC Air-Tite Housing |
|-----------|-----|---------------------|



Aperture: 3" [76mm]  
 Ceiling Opening: 3 3/4" [95mm]  
 Gimbal Diameter: 2 3/4" [70mm]  
 Outside Diameter: 4 1/4" [108mm]

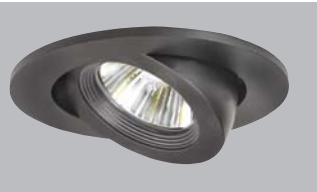
| Trim                           | Finish  |
|--------------------------------|---|
| 3009=3" Adjustable Gimbal Trim | WHBB=White with Black Baffle<br>WHWB=White with White Baffle<br>BKBB=Black with Black Baffle<br>SNBB=Satin Nickel with Black Baffle<br>ACBB=Antique Copper with Black Baffle<br>TBZBB=Tuscan Bronze with Black Baffle |



**3009WHBB**  
White with Black Baffle



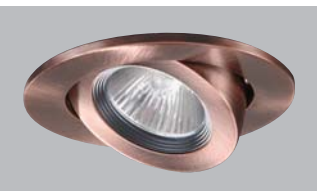
**3009WHWB**  
White with White Baffle



**3009BKBB**  
Black with Satin Black Baffle



**3009SNBB**  
Satin Nickel with Black Baffle



**3009ACBB**  
Antique Copper with Black Baffle



**3009TBZBB**  
Tuscan Bronze with Black Baffle

## 3009 3" Adjustable Gimbal

**3" TRIMS**  
ADV060277

Note: Specifications and Dimensions subject to change without notice. Visit our web site at [www.cooperlighting.com](http://www.cooperlighting.com)